

Boardwalk

Birdwell Road

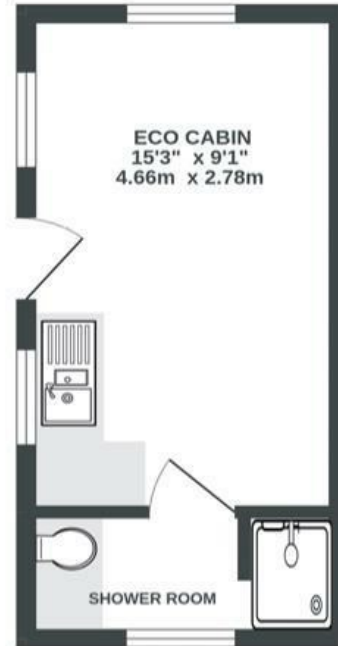
LONG ASHTON

APPROXIMATE FLOOR AREA
87.2 SQM / 939 SQFT

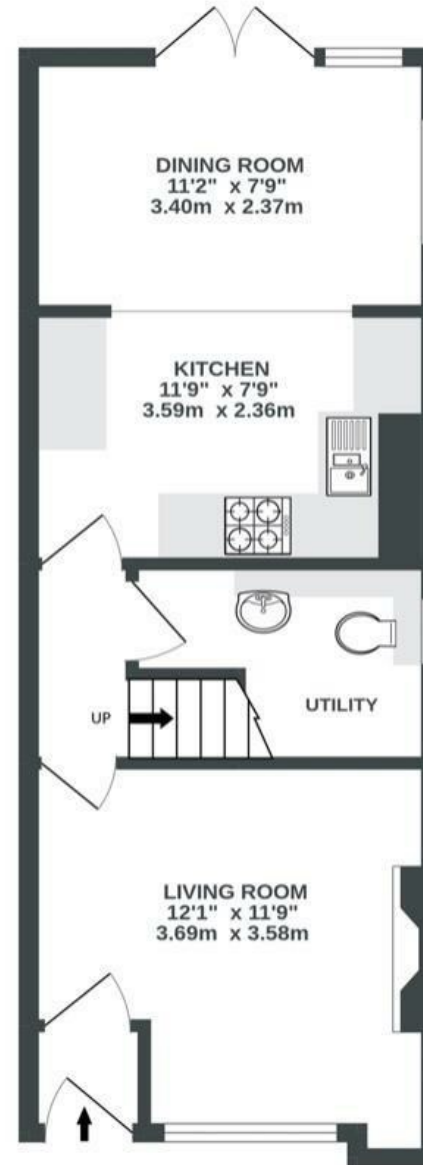
BOOK A VIEWING
01179 898 222
hello@boardwalkpropertyco.com



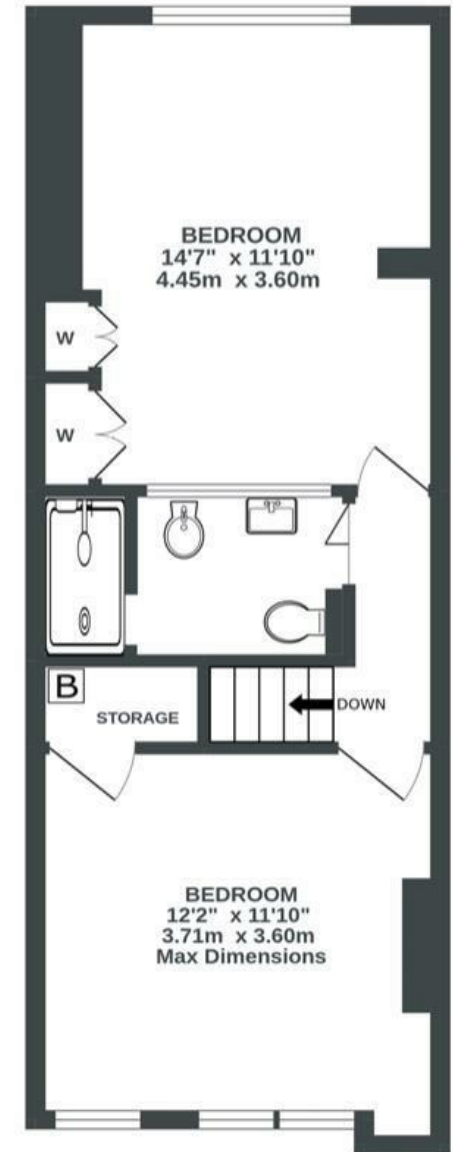
ECO CABIN
(NOT IN SITU)
174 sq.ft. (16.2 sq.m.) approx.



GROUND FLOOR
380 sq.ft. (35.3 sq.m.) approx.



1ST FLOOR
385 sq.ft. (35.8 sq.m.) approx.



Illustrations are for reference purposes only, measurements are approximate, not to scale.

Boardwalk

Birdwell Road

LONG ASHTON, BRISTOL

£

£425,000

zzz

2 Bedrooms



Bristol, BS41

9RR



1 Bathrooms

"This house has the best of both worlds and I've loved living here: it has the vibe of a country cottage, but one that a stone's throw from Bristol's southside. I can wake up to the sound of birdsong outside my bedroom window, head out on the Festival Way cycle path past grazing cows, and be shopping at Tobacco Factory market 15 minutes later. David Lloyd gym with its indoor and outdoor pools is a five minute bike ride away. I've done a lot of home improvements, all using sustainable and up-cycled materials, including building a spacious eco-cabin at the bottom of the long woodland-style garden – it's great for home-working, writing (I'm a playwright), acoustic jamming, and summer BBQs on the decking outside. There's a sunny side-garden too with raised beds for herb and veg growing. Long Ashton – known locally as L.A. or 'Lallywood' – has three good pubs, footpath walks, an eccentric post office with scoop away wholefoods and eco-refills, as well as a monthly market and the L.A. Cinema club. My work and wanting to be nearer to theatre friends and family is taking me back into town now, but I know I'm going to miss this rural oasis."

